

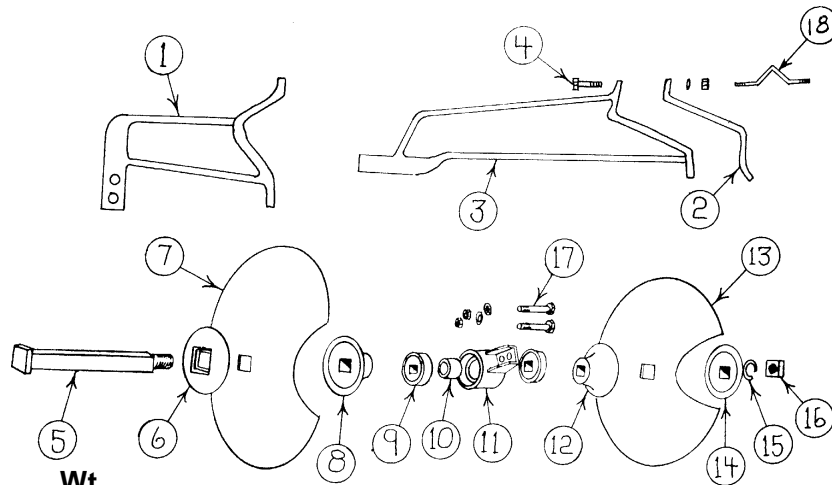
# **SINGLE BEAM DISK BEDDER**

**Model Nos. 710124, 710128, 710138, 710142**

# 710124 - 1 1/8" Axle Disk Bedder

## HEAVY DUTY CAST BEAM

### 1-1/8" SQ. AXLE DISK BEDDER



No. 710124,  
No. 710118  
&  
No. 710018

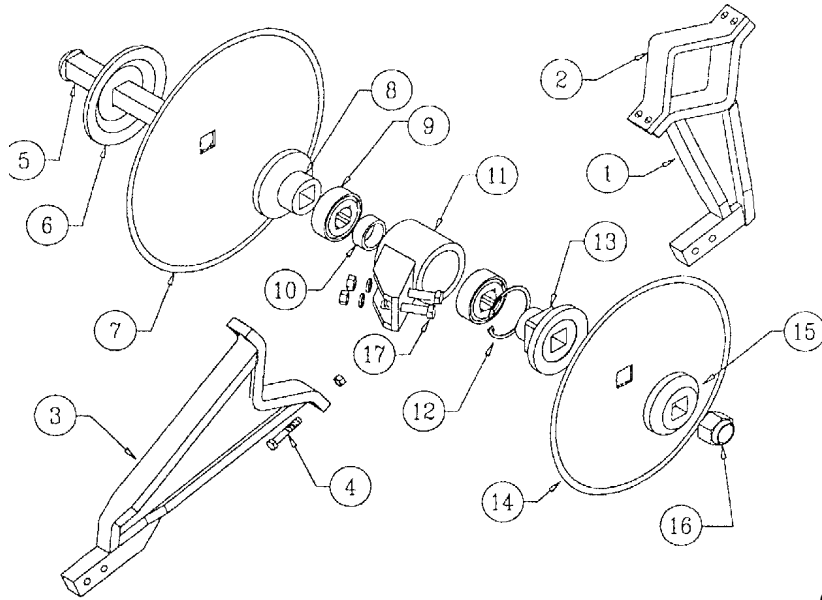
Item No.	Part No.	Wt. Lbs.	Description	Qty. Req'd. for One Row
1	478004	35	Front Beam -- 1-1/8" Axle Bedder.....(4 x 7 Tool Bar) .....	1
2	407012	8	Backing Clamp -- 3/4".....(4 x 7 Tool Bar) .....	2
3	478005	42	Rear Beam -- 1-1/8" Axle Bedder.....(4 x 7 Tool Bar) .....	1
4	411565	-	Hex Bolt -- 5/8" x 3 1/2" NC - Gr 5 - Zinc .....	8
-	412010	-	Hex Nut -- 5/8" - 11 - Gr 2 - Zinc .....	8
-	413510	-	Lock Washer -- 5/8" - Zinc .....	8
5	478100	5	1-1/8" Sq. x 12-3/8" Axle (Bedder) .....	2
6	478020	5	6" Concave Disk Washer -- 1-1/8" Axle DB .....	2
7	473018	12	18" x 9 Ga Plain Blade -- 1-1/8" Sq Ctr Hole* .....	2
-	473020	15	20" x 9 Ga Plain Blade -- 1-1/8" Sq Ctr Hole .....	
8	201492	4	Convex Bearing Spacer -- 1-1/8" Axle DB .....	2
9	481202	1	Sealed Bearing -- 1-1/8" Axle Bedder - W-208-PP5 .....	4
10	200881	1/2	Bearing Spacer -- 1-1/8" Axle Bedder .....	2
11	201306	10 1/4	Bearing Housing -- 1-1/8" Axle Bedder .....	2
-	710004	13 1/2	Housing Complete with Bearings -- 1-1/8" Axle Bedder ..	
12	201493	4	Concave Bearing Spacer -- 1-1/8" Axle Bedder .....	2
13	473016	8	16" x 9 Ga Plain Blade -- 1-1/8" Sq Ctr Hole* .....	2
14	201494	4	Concave Axle Washer -- 1-1/8" Axle Bedder .....	2
15	413518	-	Lock Washer -- 1-1/8" - Zinc.....	2
16	412318	-	Square Nut -- 1-1/8" - 7 - Gr 2 - Zinc .....	2
17	411220	-	Hex Bolt -- 5/8" x 3-1/2" NC - Gr 2 - Zinc .....	4
-	412010	-	Hex Nut -- 5/8" - 11 - Gr 2 - Zinc .....	4
-	413510	-	Lock Washer -- 5/8" - Zinc .....	4

\* NO LONGER AVAILABLE

#### PARTS FOR 7" x 7" SQ. BAR

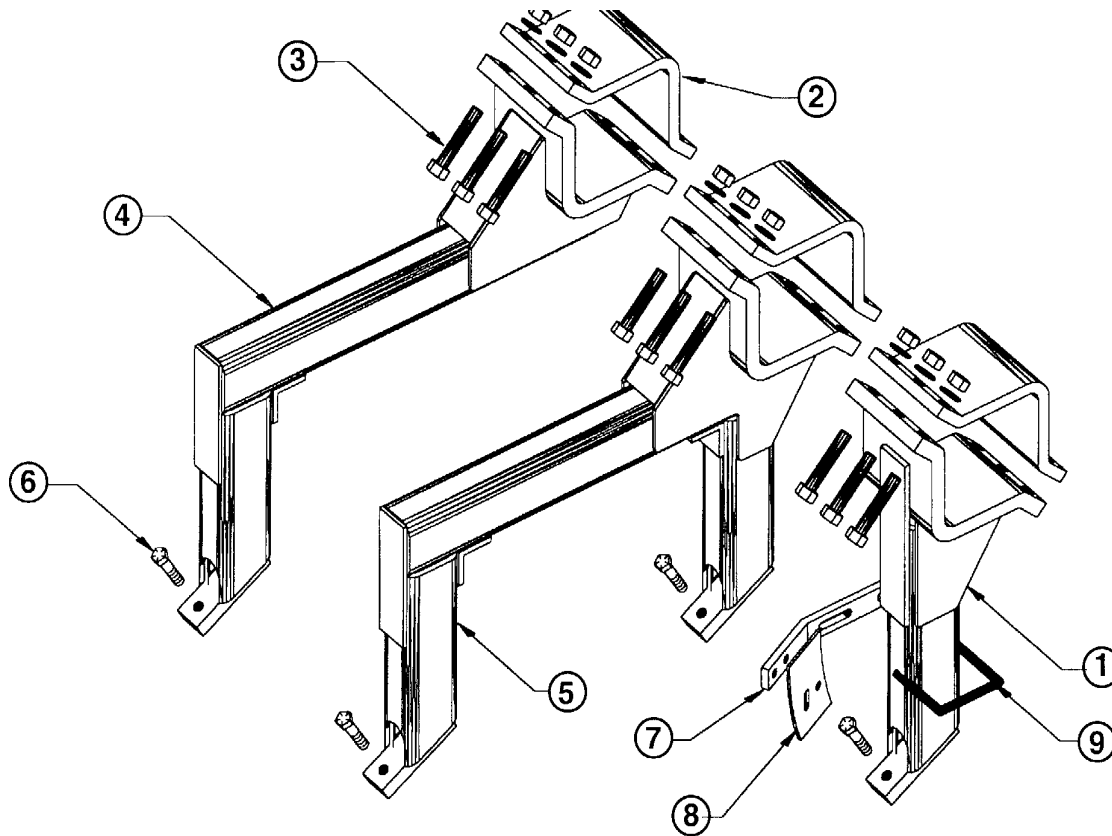
18	411930	3/4	V-Bolt -- 5/8" - Gr. 5 (Used with #407012 Clamp).....	4
-	412010	-	Hex Nut -- 5/8" - 11 - Gr 2 - Zinc .....	4
-	413510	-	Lock Washer -- 5/8" - Zinc .....	4
N/I	202899	10	Special 7 x7 Backing Plate (Used under Hyd. Cylinder only) ....	4
N/I	202898	1/2	Formed Bolt -- 5/8" x 6" Gr. 5 (Used with above #202899 Backing Plate) .....	4
-	412010	-	Hex Nut -- 5/8" - 11 - Gr 2 - Zinc .....	4
-	413510	-	Lock Washer -- 5/8" - Zinc .....	4
N/I	710035	-	Pair of HD/HC Bedder Scrapers -- 1-1/8" Sq Ctr Hole ....	1

**710128 - 1 1/2" Axle Disk Bedder**  
**HIGH CLEARANCE WELDED BEAM**  
**1 1/2" SQ. AXLE DISK BEDDER**



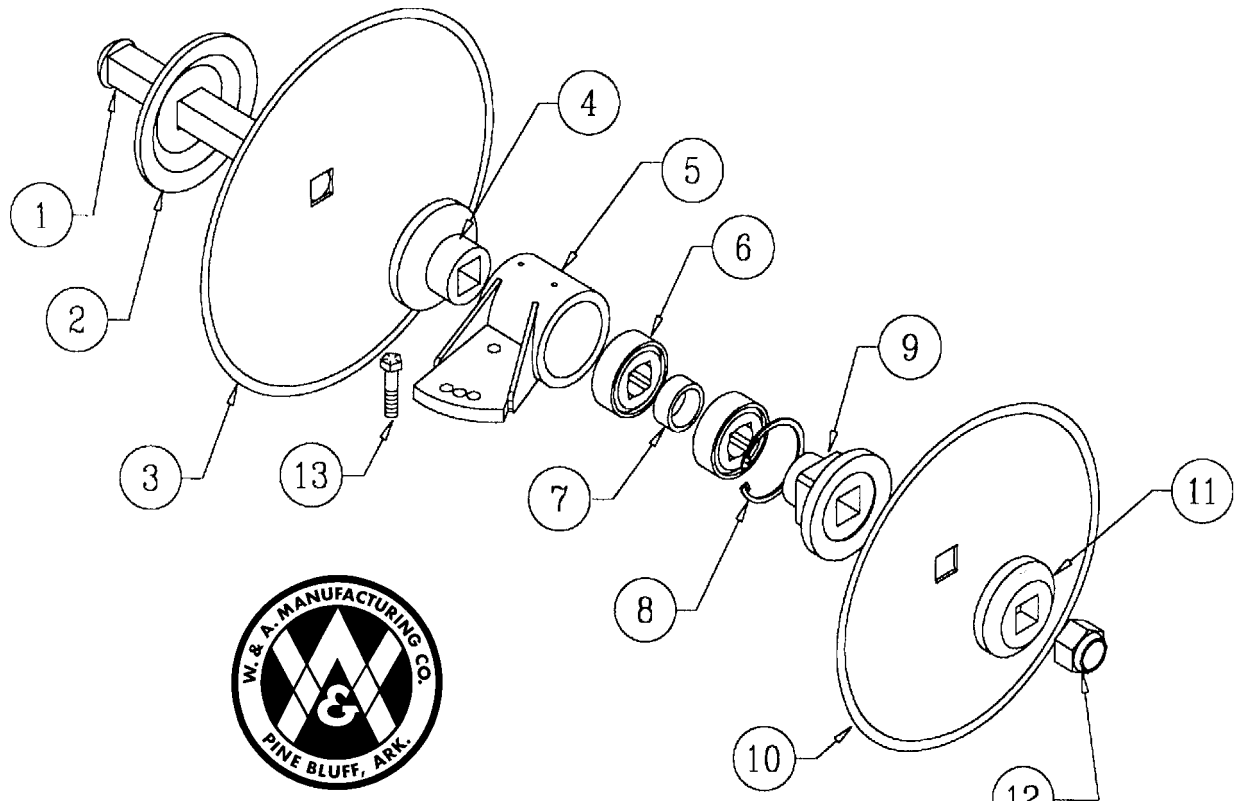
<u>Item No.</u>	<u>Part No.</u>	<u>Wt. Lbs.</u>	<u>Description</u>	<u>Qty. Req'd. Per Row</u>
1	301748	47 <sup>3</sup> / <sub>4</sub>	Front Beam -- 7 x 7 High Clearance Bedder .....	1
2	203770	10	Backing Plate -- 1 1/2" Axle Bedder - 3/4" Bolts.....(7" Sq. Bar) ....	2
-	202320	10	Backing Plate -- 1 1/2" Axle Bedder - 5/8" Bolts.....(7" Sq. Bar) .....	-
3	301749	68 <sup>1</sup> / <sub>2</sub>	Rear Beam -- 7 x 7 High-Clearance Bedder .....	1
4	411591	1/4	Hex Bolt -- 3/4" x 4" NC - Gr 5 - Zinc .....	8
-	410012	-	Lock Nut -- 3/4" NC - Gr 2 - Zinc .....	8
5	478302	8 <sup>3</sup> / <sub>4</sub>	Bedder Axle -- 1 1/2" - 7 x 7 High Clearance Bedder .....	2
6	203720	8 <sup>3</sup> / <sub>4</sub>	Bumper Washer -- 1 1/2" Axle Bedder .....	2
7	473046	17 <sup>1</sup> / <sub>4</sub>	20" x 5MM Plain Blade -- 1 1/2" Sq. Ctr. Hole .....	2
8	203713	7 <sup>1</sup> / <sub>4</sub>	Convex End Bell -- 1 1/2" Axle Bedder .....	2
9	481213	2 <sup>1</sup> / <sub>2</sub>	Bearing -- 1 1/2" Sq. Bore - GW211PPB3 .....	4
10	203716	1/2	Bearing Spacer -- 1 1/2" Axle Bedder .....	2
11	203715	12 <sup>1</sup> / <sub>2</sub>	Bearing Housing -- 1 1/2" Axle Bedder .....	2
-	414800	-	Set Screw -- 1/4" 28 x 3/8" Headless w/Slot Plain Finish .....	4
-	450109	-	Grease Fitting -- 1/4" - 28 .....	4
12	483393	-	Retaining Ring -- LP & 1 1/2" Axle Bedder .....	6
13	203717	7 <sup>1</sup> / <sub>2</sub>	Concave End Bell -- 1 1/2" Axle Bedder .....	2
14	473044	14 <sup>1</sup> / <sub>4</sub>	18" x 5MM Plain Blade -- 1 1/2" Sq. Ctr. Hole .....	2
15	478029	4 <sup>3</sup> / <sub>4</sub>	Axle Washer -- 1 1/2" Bedder .....	2
16	410032	1	Lock Nut -- 1 1/2" NF - Top Lock - Zinc .....	2
17	411566	1/2	Hex Bolt -- 5/8" x 4" NC - Gr 5 - Zinc .....	4
-	412010	-	Hex Nut -- 5/8" - 11 - Gr 2 - Zinc .....	4
-	413510	-	Lock Washer -- 5/8" - Zinc .....	4
N/I	710038		Pair of HD/HC Disk Bedder Scrapers -- 1 1/2" Axle	
-	203773		Spacer (Backing Plate for Scrapers)	

**710138 - 710142 - 1 1/2" Axle Disk Bedder**  
**SINGLE BEAM**  
**1 1/2" SQ. AXLE DISK BEDDER**



Item No.	Part No.	Wt. Lbs.	Description	Quantity Req'd.	
				8 Row	12 Row
1	302162	60¾	Front Single Beam -- 1 1/2" Sq. Axle DB .....	1	1
2	204517	24	Backing Clamp -- SB 1 1/2" Sq. Axle DB .....	9	13
3	411820	½	Hex Bolt -- 3/4" x 4 1/2" NC - Gr 8 - Zinc .....	54	78
-	410012	-	Lock Nut -- 3/4" NC - Gr 2 - Zinc .....	54	78
-	413072	-	Flat Washer -- 3/4" ASAE .....	54	78
4	302164	97½	Rear Single Beam -- 1 1/2" Sq. Axle DB .....	1	1
5	302160	116½	Double Single Beam -- 1 1/2" Sq. Axle DB .....	7	11
6	411811	¼	Hex Bolt -- 5/8" x 2 3/4" NC - Gr 8 - Zinc .....	32	48
-	412010	-	Hex Nut -- 5/8" - 11 - Gr 2 - Zinc .....	32	48
-	413510	-	Lock Washer -- 5/8" - Zinc .....	32	48
7	204520	2½	Scraper Arm -- Single Beam Bedder .....	16	24
8	204519	1¼	Scraper Blade -- Single Beam Bedder .....	16	24
-	411545	-	Hex Bolt -- 1/2" x 1 1/2" NC - Gr 5 - Zinc .....	16	24
-	411785	-	Carriage Bolt -- 1/2" x 1 1/2" NC - Gr 5 - Zinc .....	16	24
-	412008	-	Hex Nut -- 1/2" - 13 - Gr 2 - Zinc .....	32	48
-	413508	-	Lock Washer -- 1/2" - Zinc .....	32	48
9	415115	¾	1/2" Sq. U-Bolt x 4" x 4-3/16" Leg .....	16	24
-	410008	-	Lock Nut -- 1/2" NC - Zinc .....	32	48
-	413008	-	Flat Washer -- 1/2" - Zinc .....	32	48

# 710138 - 710142 - 1 1/2" Axle Disk Bedder SINGLE BEAM GANG ASSEMBLY 1 1/2" SQ. AXLE DISK BEDDER

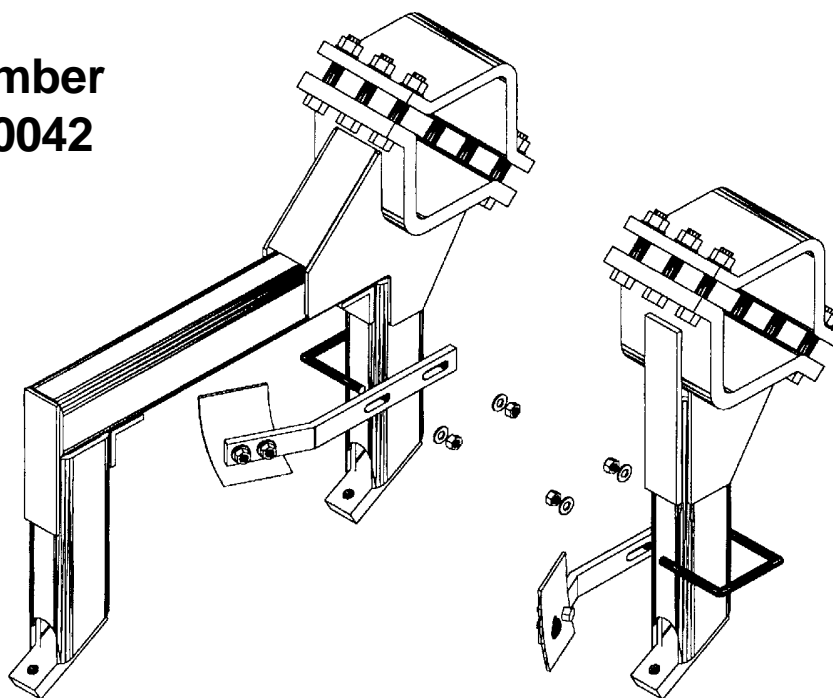


<u>Item No.</u>	<u>Part No.</u>	<u>Wt. Lbs.</u>	<u>Description</u>	<u>Qty. Req'd for One Gang</u>
1	478302	8 <sup>3</sup> / <sub>4</sub>	Bedder Axle -- 1 1/2" .....	1
2	203720	8 <sup>3</sup> / <sub>4</sub>	Bumper Washer -- 1 1/2" Axle Bedder .....	1
3	473046	17 <sup>1</sup> / <sub>4</sub>	20" x 5MM Plain Disk Blade -- 1 1/2" Sq. Ctr. Hole .....	1
4	203713	7 <sup>1</sup> / <sub>4</sub>	Convex End Bell -- 1 1/2" Axle Bedder .....	1
5	204500	15 <sup>3</sup> / <sub>4</sub>	Bearing Housing -- SB 1 1/2" Sq. Axle DB .....	1
-	414800	-	Set Screw -- 1/4" - 28 x 3/8" Headless w/Slot - PF .....	2
-	450109	-	Grease Fitting -- 1/4" - 28 .....	2
6	481213	2 <sup>1</sup> / <sub>2</sub>	Bearing -- 1 1/2" Sq. Bore - Peer - GW211PPB3 .....	2
7	203716	1/2	Bearing Spacer -- 1 1/2" Axle Bedder .....	1
8	483393	-	Retaining Ring -- LP & 1 1/2" Axle Bedder .....	2
9	203717	7 <sup>1</sup> / <sub>2</sub>	Concave End Bell -- 1 1/2" Axle Bedder .....	1
10	473044	14 <sup>1</sup> / <sub>4</sub>	18" x 5MM Plain Disk Blade -- 1 1/2" Sq. Ctr Hole .....	1
11	478029	4 <sup>3</sup> / <sub>4</sub>	Axle Washer -- 1 1/2" Bedder .....	1
12	410032	1	Lock Nut -- 1 1/2" NF - Top Lock - Zinc .....	1
13	411811	1/4	Hex Bolt -- 5/8" x 2 3/4" NC - Gr 8 - Zinc .....	2
-	412010	-	Hex Nut -- 5/8" - 11 - Gr 2 - Zinc .....	2
-	413510	-	Lock Washer -- 5/8" - Zinc .....	2

**710138 - 710142 - 1 1/2" Axle Disk Bedder**

**SINGLE BEAM BEDDER  
SCRAPERS -- PAIR**

**Number  
710042**



<u>Part No.</u>	<u>Description</u>	<u>Quantity</u>	
		<u>8 Row</u>	<u>12 Row</u>
710040	Scraper Arm & Blade Assembly -- RH .....	8	12
710041	Scraper Arm & Blade Assembly -- LH .....	8	12
410008	Lock Nut -- 1/2" NC - Zinc .....	32	48
413008	Flat Washer -- 1/2" - Zinc .....	32	48
415115	1/2" Sq. U Bolt x 4" x 4-3/16" Leg .....	16	24



*Quality Products from*

**W & A MANUFACTURING COMPANY**

P.O. Box 5238, Pine Bluff, Arkansas 71611

Phone: (870) 534-7420

Fax: (800) 336-1318

Website: [www.wamfgco.com](http://www.wamfgco.com)