

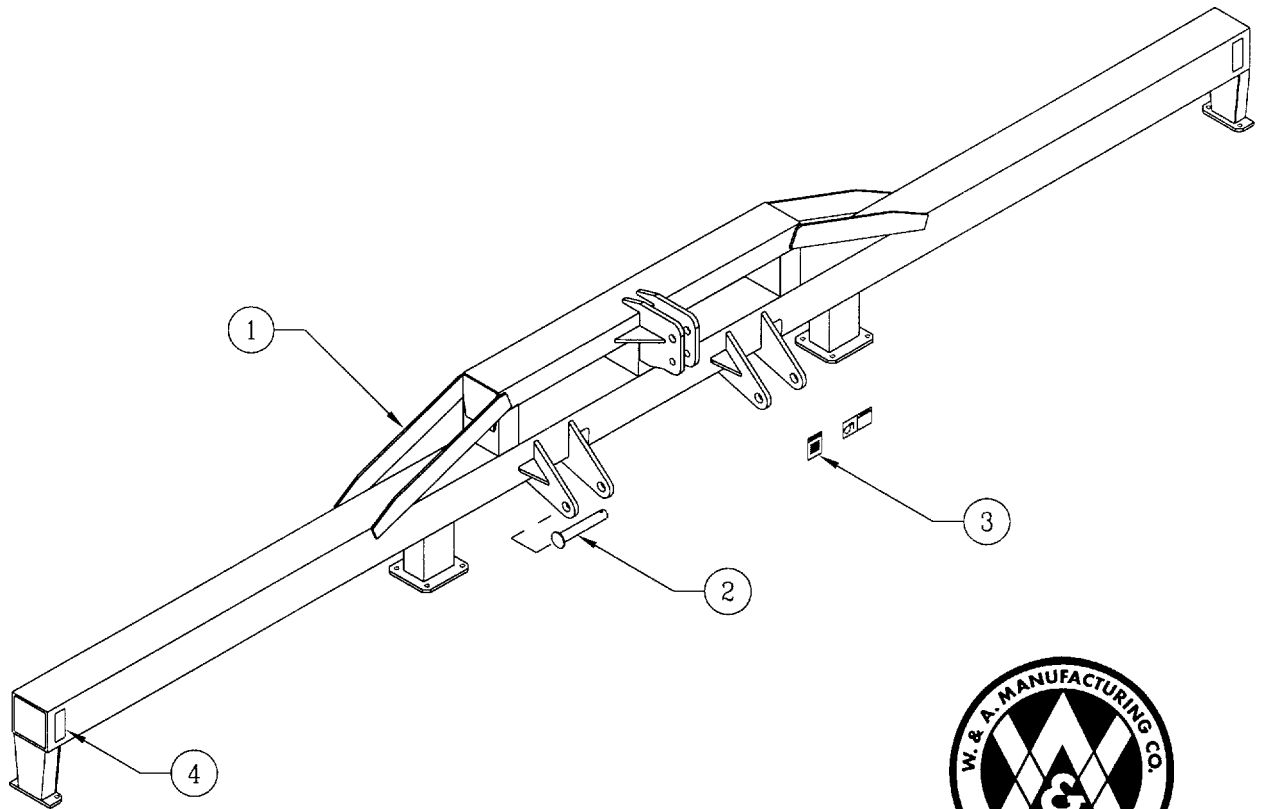
6 @ 38"/40" Row -- 8 @ 38"/40" Row -- 12 @ 30" Row

RIGID CHOPPER-BEDDER

Model No. 3856 & 3858 & 3860

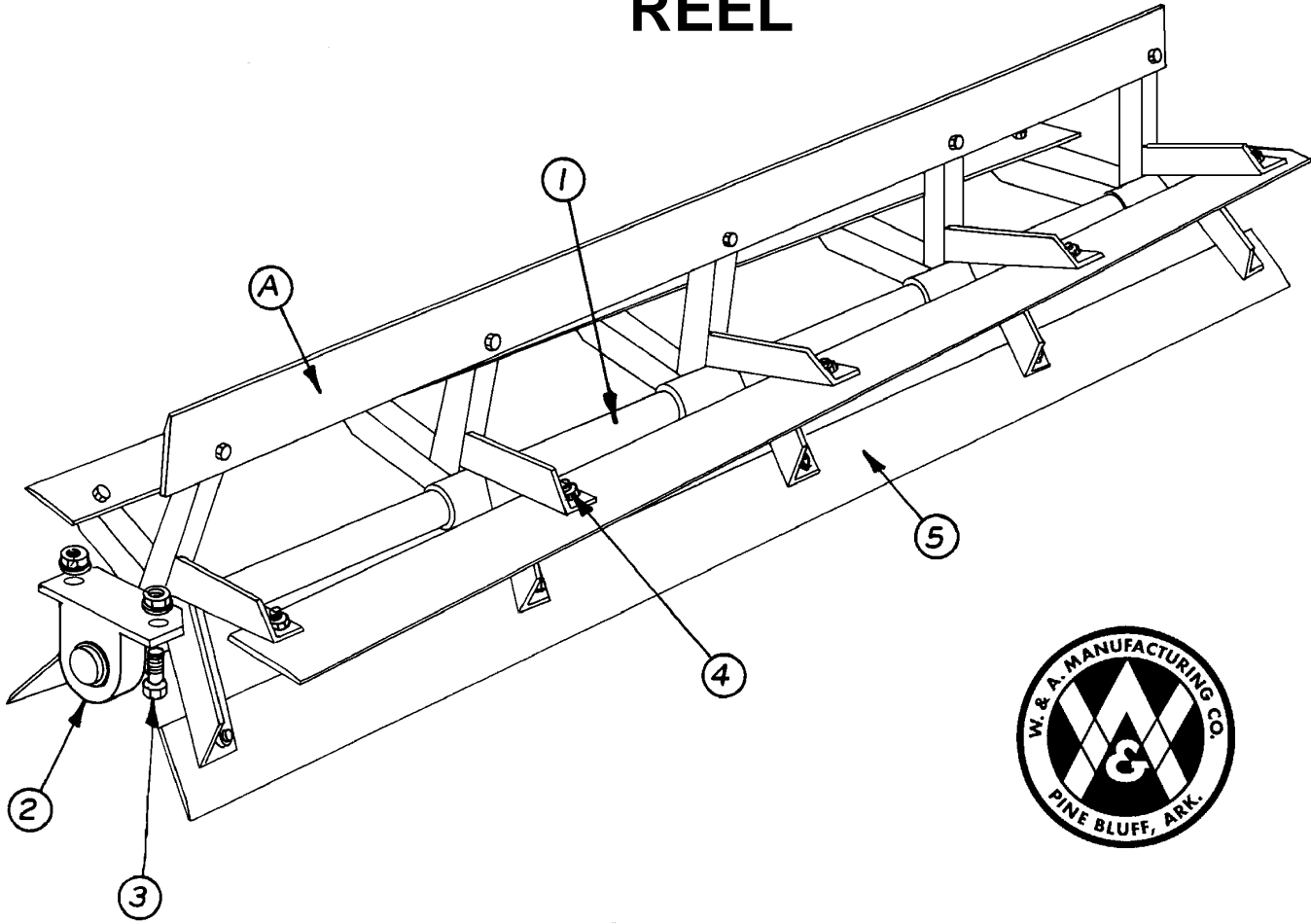
3856 - 3858 - 3860 - Rigid Chopper Bedder

REEL FRAME



<u>Item No.</u>	<u>Part No.</u>	<u>Wt. Lbs.</u>	<u>Description</u>	<u>Qty. Req'd</u>
1	302248	994	Six Row 38"/40" Reel Frame	1
-	302249	1,369	Eight Row 38"/40" Reel Frame	1
-	302250	1,518	Twelve Row 30" Reel Frame	1
2	300841	4	Hitch Pin - 1-7/16" x 9"	2
-	416207	-	7/16" Klik Pin - Zinc	2
N/I	416698	2	1-1/4" Top Link Pin - Zinc (6-1/2")	1
-	416207	-	7/16" Klik Pin - Zinc	1
3	461123	-	"Warning - Read Operator's Manual" Safety Sign	1
-	461138	-	"Danger - Crushing Hazard" Safety Sign	1
4	461200	-	Yellow Reflector	2
-	461201	-	Red Reflector (One at each end of rear tool bar)	2

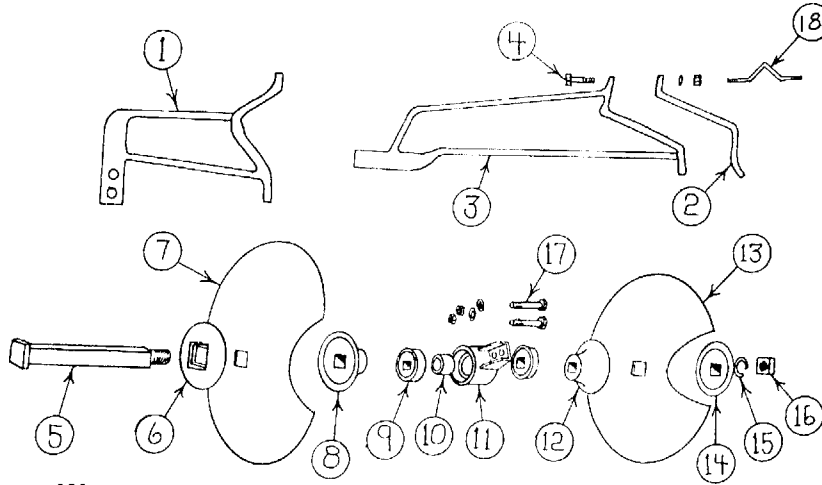
REEL



Item No.	Part No.	Wt. Lbs.	Description	Qty. Req'd for 1 Machine		
				6 Row	8 Row	12 Row
A	770020	235	Spiral 6 ft Reel Complete w/Bearings	3	4	-
-	770030	288	Spiral 84" Reel Complete w/Bearings	-	-	4
1	300451	116	1-15/16" x 77" Shaft w/5 spiral brackets only	3	4	-
-	302149	152	1-15/16" x 89" Shaft w/6 spiral brackets only	-	-	4
2	482101	4	1-15/16" Pillow Block & Bearing - Pulv	6	8	8
-	481215	1	1-15/16" Bearing w/Lock Collar Peer #G1115-KRRB-S1115K	-	-	-
-	480006	3	Pillow Block for 1-15/16" Bearing	-	-	-
3	411562	¼	Hex Bolt -- 5/8" x 2" NC - Gr 5 - Zinc	12	16	16
-	410009	-	Lock Nut -- 5/8" NC - Zinc	12	16	16
-	413010	-	Flat Washer -- 5/8" - Zinc	12	16	16
4	411211	¼	Hex Bolt -- 5/8" x 1-1/4" NC - Gr 2 - Zinc	75	100	120
-	410009	-	Lock Nut -- 5/8" NC - Zinc	75	100	120
5	200539	20	Spiral Pulv Blade x 72"(9/32" x 4" x 72")	15	20	-
-	204482	24¾	Spiral Pulv Blade x 84"(9/32" x 4" x 84")	-	-	20

3856 - 3858 - 3860 - Rigid Chopper Bedder

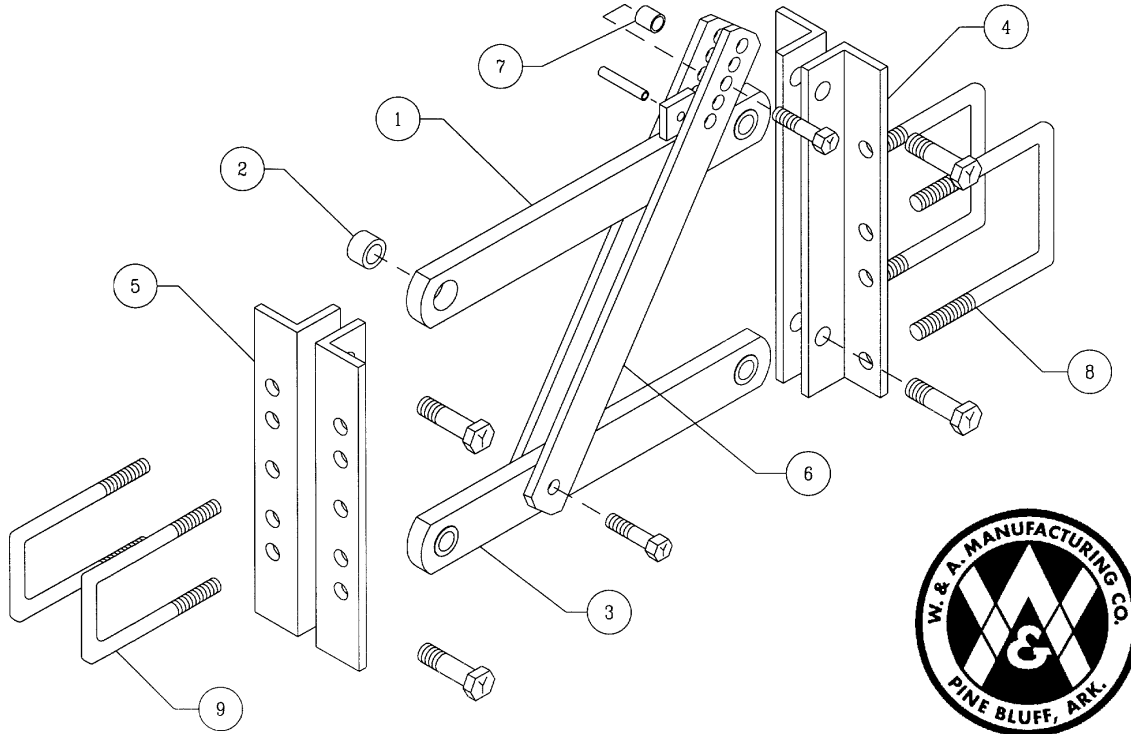
**HEAVY DUTY CAST BEAM
1-1/8" SQ. AXLE DISK BEDDER**



No. 710124

<u>Item No.</u>	<u>Part No.</u>	<u>Wt. Lbs.</u>	<u>Description</u>	<u>Qty. Req'd. for One Row</u>
1	478004	35	Front Beam -- 4 x 7 Tool Bar	1
2	407012	8	Backing Clamp 4 x 7 Bar -- 3/4"	2
3	478005	42	Rear Beam -- 4 x 7 Tool Bar	1
4	411565	-	Hex Bolt -- 5/8" x 3-1/2" NC - Gr 5 - Zinc	8
-	412010	-	Hex Nut -- 5/8" - 11 - Gr 2 - Zinc	8
-	413510	-	Lock Washer -- 5/8" - Zinc	8
5	478100	5	1-1/8" Sq. x 12-3/8" Axle (Bedder)	2
6	478020	5	6" Concave Disk Washer -- 1-1/8" Axle DB	2
7	473018	12	18" x 9 Ga Plain Blade -- 1-1/8" Sq Ctr Hole	2
-	473020	15	20" x 9 Ga Plain Blade -- 1-1/8" Sq Ctr Hole	
8	201492	4	Convex Bearing Spacer -- 1-1/8" Axle DB	2
9	481202	1	Sealed Bearing - Bedder - 1-1/8"	4
10	200881	1/2	Bearing Spacer -- 1-1/8" Axle Bedder	2
11	201306	10 1/4	Bearing Housing -- 1-1/8" Axle Bedder	2
-	710004	13 1/2	Bearing Housing with Bearings	
12	201493	4	Concave Bearing Spacer -- 1-1/8" Axle DB	2
13	473016	8	16" x 9 Gauge Disk Blade	2
14	201494	4	Concave Axle Washer -- 1-1/8" Axle Bedder	2
15	413518	-	Lock Washer -- 1-1/8" - Zinc	2
16	412318	-	Square Nut -- 1-1/8" - 7 - Gr 2 - Zinc	2
17	411220	-	Hex Bolt -- 5/8" x 3-1/2" NC - Gr 2 - Zinc	4
-	412010	-	Hex Nut -- 5/8" - 11 - Gr 2 - Zinc	4
-	413510	-	Lock Washer -- 5/8" - Zinc	4
N/I	710035	4 1/2	Scraper (Pair)	1

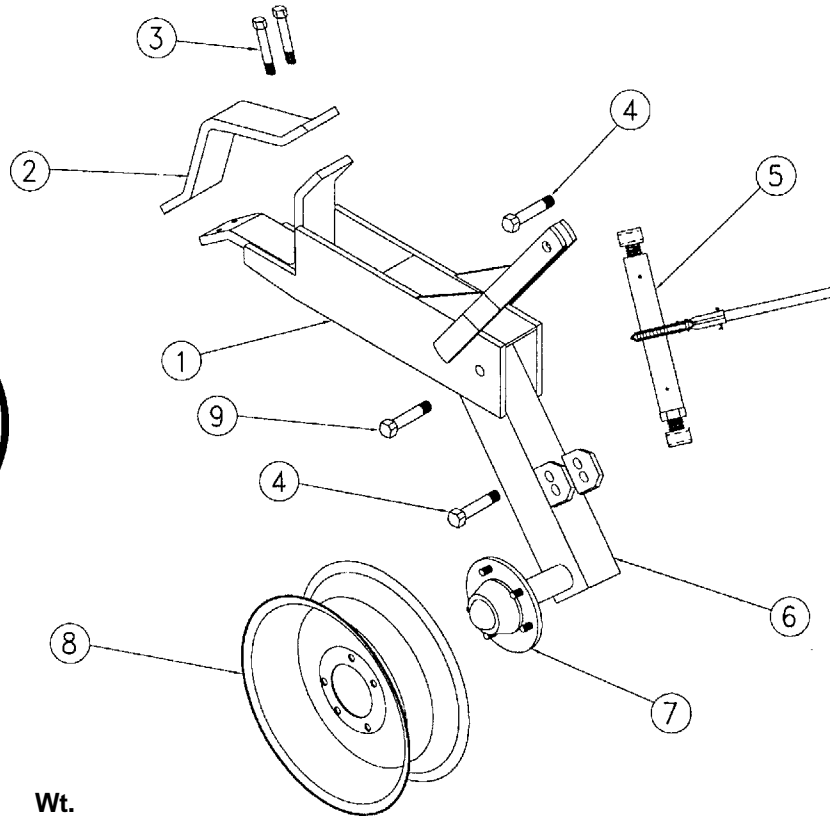
PARALLEL BRACKET



<u>Item No.</u>	<u>Part No.</u>	<u>Wt. Lbs.</u>	<u>Description</u>	<u>Qty. Req'd. for One Brkt.</u>
1	302253		Top Stop Arm	1
-	4161131	-	Roll Pin -- 1/2" x 2-1/2"	1
2	204578	1/2	Arm Bushing -- 1-5/8" OD x 1-1/16" Long	4
-	411642	1	Hex Bolt -- 1" x 3-1/2" NC - Gr. 5 - Zinc	4
-	412016	1/4	Hex Nut -- 1" - 8 - Gr. 2 - Zinc	4
-	413516	-	Lock Washer -- 1" - Zinc	4
3	204571		Bottom Arm	1
4	204573		Front Angle - RH	1
-	204574		Front Angle - LH	1
5	204575		Rear Angle	2
6	204576		Stop Arm	2
7	204577	-	Stop Arm Spacer	1
-	411589		Hex Bolt -- 3/4" x 3" NC - Gr. 5 - Zinc	2
-	412012		Hex Nut -- 3/4" - 10 - Gr. 2 - Zinc.	2
-	413512		Lock Washer -- 3/4" - Zinc	2
8	415021		7/8" Sq. U-Bolt x 7" x 9" Leg	2
-	412014	1/4	Hex Nut -- 7/8" - 9 - Gr. 2 - Zinc	4
-	413014	-	Lock Washer -- 7/8" - Zinc	4
9	415006	3	3/4" Sq. U-Bolt x 4" x 8-1/2" Leg	2
-	412012	-	Hex Nut -- 3/4" - 10 - Gr. 2 - Zinc	4
-	413512	-	Lock Washer -- 3/4" - Zinc	4

3856 - 3858 - 3860 - Rigid Chopper Bedder

RATCHET ADJ. GAUGE WHEELS



No. 1338
& 1339

Item No.	Part No.	Wt. Lbs.	Description	Qty. Req. for 1 Assembly
1	302225	60	Holder	1
2	203770	10	Backing Clamp for 7" x 7" Bar	1
3	411591	½	Hex Bolt -- 3/4" x 4" NC - Gr 5 - Zinc	4
-	412012	-	Hex Nut -- 3/4" - 10 - Gr 2 - Zinc	6
-	413512	-	Lock Washer -- 3/4" - Zinc	6
4	411591	½	Hex Bolt -- 3/4" x 4" NC - Gr 5 - Zinc	2
5	302025	11½	Ratchet Crank Assembly	1
6	302226	34¾	RH Leg w/Hub -- #1338 Gauge Wheel (Shown)	1
-	302227	34¾	LH Leg w/Hub -- #1338 Gauge Wheel	1
7	491119	11	5 Hole Hub Complete - Q-719	1
-	491007	9¾	Hub w/Cups Only - Q-719	1
-	481205	¼	Cone - Q719 - LM67048	1
-	496010	-	Outer Cup - Q719 - LM67010	1
-	481204	¼	Cone - Q719 - LM48548	1
-	496011	-	Inner Cup - Q719 - LM48510	1
-	497010	-	Grease Seal - Q719 - CR 15190	1
-	490006	¼	Hub Cap - Q719	1
-	490015	-	1/2" NF Lug Nut	5
-	490017	-	Drive-In Hub Bolt - Q719	5
-	412164	-	Slotted Nut -- 7/8" - 14 Spindle	1
-	490034	-	Spindle Washer -- 7/8" - Q719	1
8	493007	17	15" x 5" x 5 Hole Wheel	1
9	411594	¾	Hex Bolt -- 3/4" x 5" NC - Gr 5 - Zinc	1
-	412012	-	Hex Nut -- 3/4" - 10 - Gr 2 - Zinc	1
-	413512	-	Lock Washer -- 3/4" - Zinc	1