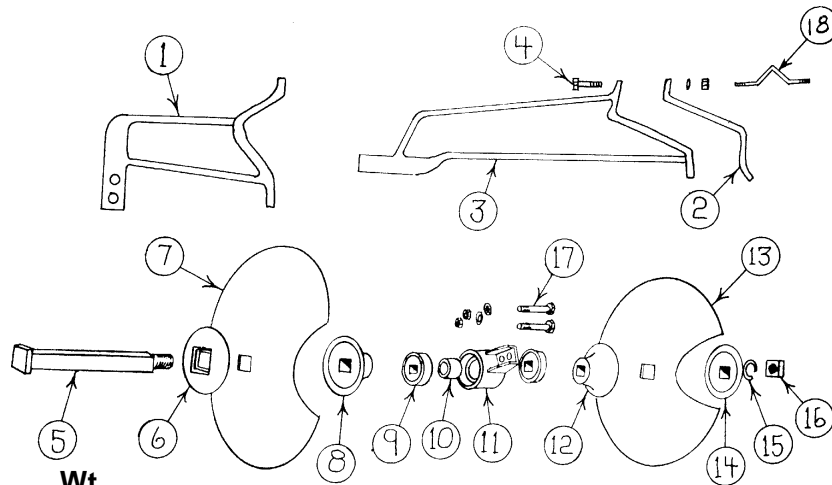


HEAVY DUTY CAST BEAM 1-1/8" SQ. AXLE DISK BEDDER



No. 710124,
No. 710118
&
No. 710018

Item No.	Part No.	Wt. Lbs.	Description	Qty. Req'd. for One Row
1	478004	35	Front Beam -- 1-1/8" Axle Bedder.....(4 x 7 Tool Bar)	1
2	407012	8	Backing Clamp -- 3/4".....(4 x 7 Tool Bar)	2
3	478005	42	Rear Beam -- 1-1/8" Axle Bedder.....(4 x 7 Tool Bar)	1
4	411565	-	Hex Bolt -- 5/8" x 3 1/2" NC - Gr 5 - Zinc	8
-	412010	-	Hex Nut -- 5/8" - 11 - Gr 2 - Zinc	8
-	413510	-	Lock Washer -- 5/8" - Zinc	8
5	478100	5	1-1/8" Sq. x 12-3/8" Axle (Bedder)	2
6	478020	5	6" Concave Disk Washer -- 1-1/8" Axle DB	2
7	473018	12	18" x 9 Ga Plain Blade -- 1-1/8" Sq Ctr Hole*	2
-	473020	15	20" x 9 Ga Plain Blade -- 1-1/8" Sq Ctr Hole	
8	201492	4	Convex Bearing Spacer -- 1-1/8" Axle DB	2
9	481202	1	Sealed Bearing -- 1-1/8" Axle Bedder - W-208-PP5	4
10	200881	1/2	Bearing Spacer -- 1-1/8" Axle Bedder	2
11	201306	10 1/4	Bearing Housing -- 1-1/8" Axle Bedder	2
-	710004	13 1/2	Housing Complete with Bearings -- 1-1/8" Axle Bedder ..	
12	201493	4	Concave Bearing Spacer -- 1-1/8" Axle Bedder	2
13	473016	8	16" x 9 Ga Plain Blade -- 1-1/8" Sq Ctr Hole*	2
14	201494	4	Concave Axle Washer -- 1-1/8" Axle Bedder	2
15	413518	-	Lock Washer -- 1-1/8" - Zinc.....	2
16	412318	-	Square Nut -- 1-1/8" - 7 - Gr 2 - Zinc	2
17	411220	-	Hex Bolt -- 5/8" x 3-1/2" NC - Gr 2 - Zinc	4
-	412010	-	Hex Nut -- 5/8" - 11 - Gr 2 - Zinc	4
-	413510	-	Lock Washer -- 5/8" - Zinc	4
* NO LONGER AVAILABLE				
PARTS FOR 7" x 7" SQ. BAR				
18	411930	3/4	V-Bolt -- 5/8" - Gr. 5 (Used with #407012 Clamp).....	4
-	412010	-	Hex Nut -- 5/8" - 11 - Gr 2 - Zinc	4
-	413510	-	Lock Washer -- 5/8" - Zinc	4
N/I	202899	10	Special 7 x7 Backing Plate (Used under Hyd. Cylinder only)	4
N/I	202898	1/2	Formed Bolt -- 5/8" x 6" Gr. 5 (Used with above #202899 Backing Plate)	4
-	412010	-	Hex Nut -- 5/8" - 11 - Gr 2 - Zinc	4
-	413510	-	Lock Washer -- 5/8" - Zinc	4
N/I	710035	-	Pair of HD/HC Bedder Scrapers -- 1-1/8" Sq Ctr Hole	1