

FOLDING TOOLBAR

**Model Nos. 1220, 1220c, 1220WM, 1222, 1222WM, 1226,
1226WM, 1228**

Table of Contents

Click the Folding Toolbar model number below for a Parts Manual for each model.

1220, 1222, 1226 - 8 Row 38", 12 Row 30", 12 Row 38"

- Pages 3 - 6

1220c - 12 Row 38" Cultivator

- Pages 7 - 10

1220WM, 1222WM, 1226WM - Watermizer bars

- Pages 11 - 13

1228 - 16 Row 30" Bedder and Water Plow

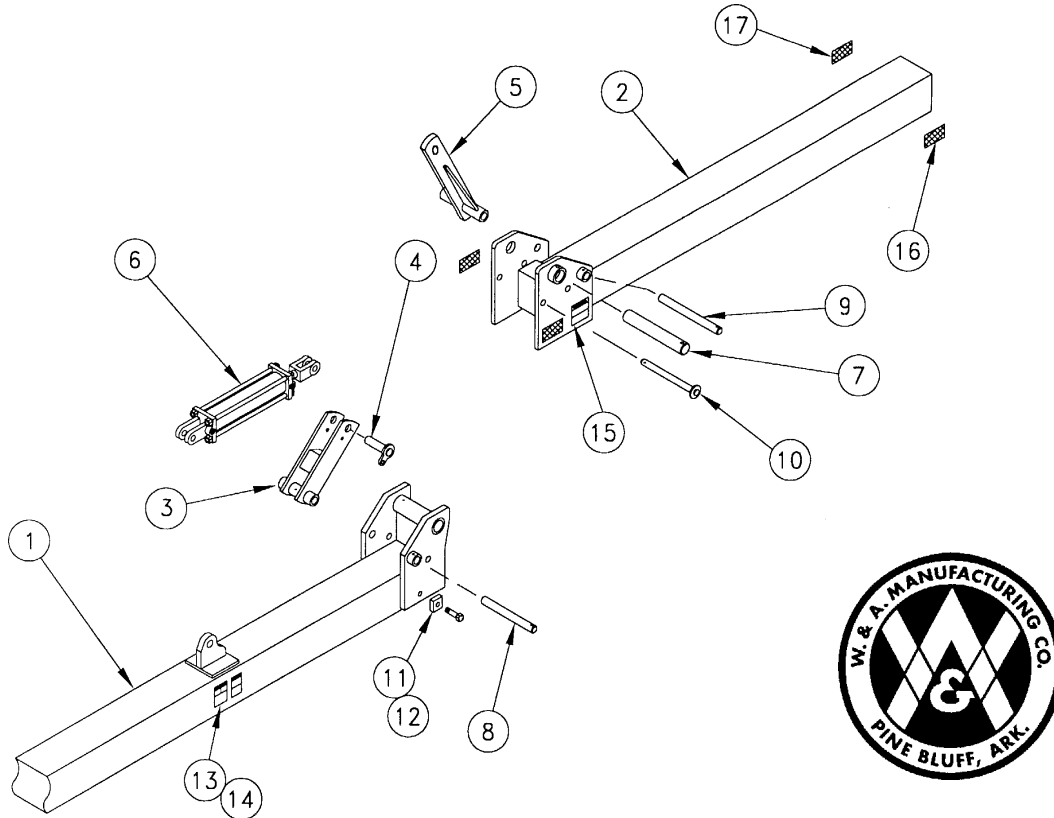
- Pages 14 - 18



150° FOLDING TOOL BAR FOR DISK BEDDERS

Model No. 1220 -- 8 @ 38" Row
Model No. 1222 -- 12 @ 30" Row
Model No. 1226 -- 12 @ 38" Row

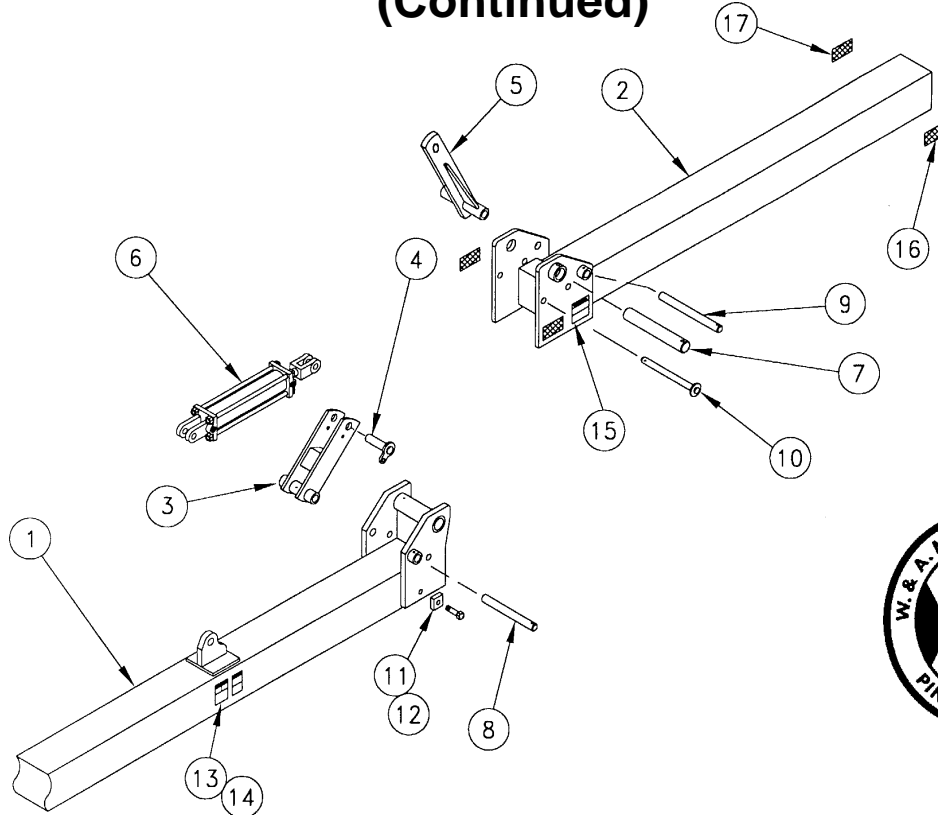
150° FOLDING TOOL BAR



ITEM NO.	PART NO.	WT. LBS.	DESCRIPTION	QTY. REQ'D	
				8 Row	12 Row
1	302092	675	Center Section -- 8 @ 38" Row (188" Tube).....	1	-
-	302095	723	Center Section -- 12 @ 30" Row (205½" Tube)..(Not Illustrated) ...	-	1
-	302098	872	Center Section -- 12 @ 38" Row (262" Tube).....(Not Illustrated) ..	-	1
2	302094	278	Wing -- 8 @ 38" Row - LH (76")	1	-
-	302093	278	Wing -- 8 @ 38" Row - RH (76").....(Not Illustrated) ...	1	-
-	302096	318	Wing -- 12 @ 30" Row - RH (91").....(Not Illustrated) ..	-	1
-	302097	318	Wing -- 12 @ 30" Row - LH (91").....(Not Illustrated) ...	-	1
-	302099	359	Wing -- 12 @ 38" Row - RH (105").....(Not Illustrated) ...	-	1
-	302100	359	Wing -- 12 @ 38" Row - LH (105").....(Not Illustrated) ..	-	1
3	302085	21	Follow Arm - 150° Fold Bar	2	2
4	302086	2¾	Cylinder Lock Pin - 150° Fold Bar	2	2
-	411545	-	Hex Bolt -- 1/2" x 1½" NC - Gr 5 - Zinc.....(Not Illustrated) ...	2	2
-	413008	-	Flat Washer -- 1/2" - Zinc.....(Not Illustrated) ...	2	2
-	413508	-	Lock Washer -- 1/2" - Zinc.....(Not Illustrated) ..	2	2
5	302084	23¼	Folding Arm - 150° Fold Bar	2	2
6	476026	100	Hydraulic Cylinder -- 5" x 16"	2	2
-	446188	1/4	1/2" x 1/2" Swivel Orifice Elbow.....(Not Illustrated) ..	4	4
7	204388	11½	Pivot Pin -- 2" x 13-1/8" - 150° Fold Bar	2	2
-	416133	-	Roll Pin -- 1/2" x 3½" - Zinc.....(Not Illustrated) ..	2	2

150° FOLDING TOOL BAR

(Continued)

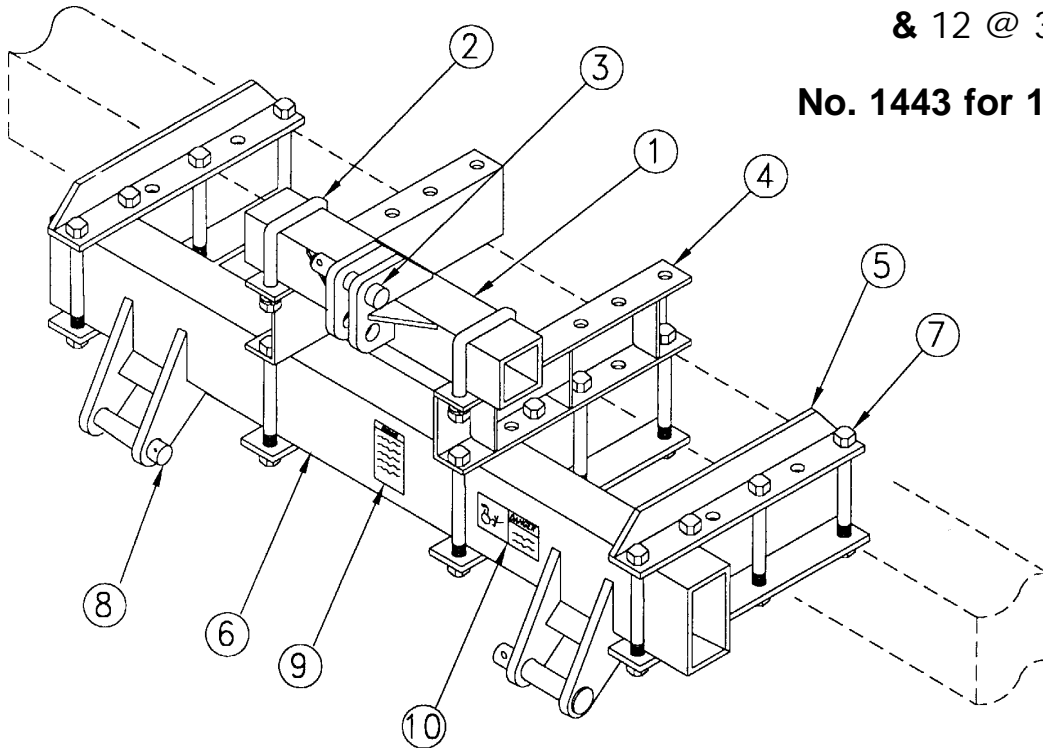


ITEM NO.	PART NO.	WT. LBS.	DESCRIPTION	QTY. REQ'D	
				8 Row	12 Row
8	204389	4	Follow Arm Pin -- 1¼" x 11½" - 150° Fold Bar	2	2
-	416109	-	Roll Pin -- 5/16" x 2½" - Zinc.....(Not Illustrated) ...	2	2
9	204390	4½	Folding Arm Pin -- 1¼" x 13-1/8" - 150° Fold Bar	2	2
-	416109	-	Roll Pin -- 5/16" x 2½" - Zinc.....(Not Illustrated) ...	2	2
10	302087	3	Wing Lock Pin - 150° Fold Bar	2	2
-	416204	-	Klik Pin -- 1/4" - Zinc.....(Not Illustrated) ..	2	2
11	204398	3/4	Stop Block -- 150° Fold Bar	4	4
-	411584	1/4	Hex Bolt -- 3/4" x 2" NC - Gr 5 - Zinc.....(Not Illustrated) ..	4	4
-	413512	-	Lock Washer -- 3/4" - Zinc.....(Not Illustrated) ..	4	4
13	461113	-	Warning Decal -- "High Pressure Fluid"	1	1
14	461137	-	Danger Decal -- "Electrocution Hazard"	1	1
15	461135	-	Warning Decal -- "Overhead Wing Hazard"	1	1
16	461200	-	Decal -- Amber Reflector - 4½" x 2"	4	4
17	461201	-	Decal -- Red Reflector - 4½" x 2"	4	4
N/I	302088	28	Wing Support Stand -- 8 @ 38" (44¾" Tube).....(Not Illustrated) ..	2	-
-	302090	31	Wing Support Stand -- 12 @ 30" (54-1/8" Tube).....(Not Illustrated) ..	-	2
-	302089	34½	Wing Support Stand -- 12 @ 38" (66¼" Tube).....(Not Illustrated) ...	-	2
-	415004	2½	3/4" Sq. U-Bolt x 7" x 9" Leg.....(Not Illustrated) ..	4	4
-	412012	-	Hex Nut -- 3/4" - 10 - Gr 2 - Zinc.....(Not Illustrated) ...	8	8
-	413512	-	Lock Washer -- 3/4" - Zinc.....(Not Illustrated) ..	8	8

CAT III HITCH FOR 7" SQ. BAR

No. 1429 for 8 @ 38" Row
& 12 @ 30" Row

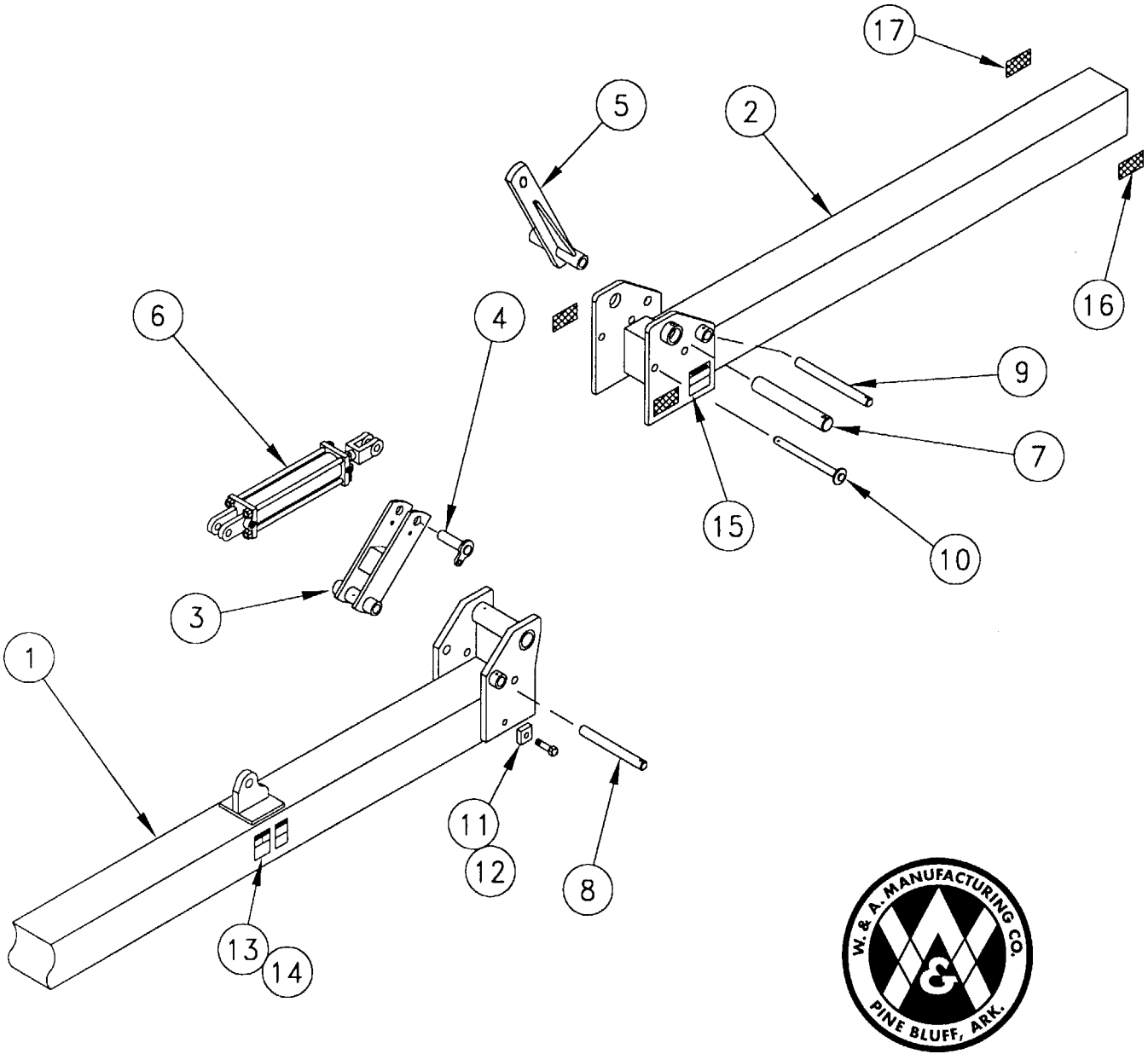
No. 1443 for 12 @ 38" Row



ITEM NO.	PART NO.	WT. LBS.	DESCRIPTION	QTY. REQ'D	
				#1429	#1443
1	300279	47½	Mast Top – Cat III – Hitch	1	1
2	415018	2	7/8" Sq. U-Bolt x 4" x 6½" Leg	2	2
-	413514	-	Lock Washer -- 7/8" - Zinc.....(Not Illustrated) ...	20	36
-	412014	-	Hex Nut -- 7/8" - 9 - Gr 2 - Zinc.....(Not Illustrated) ...	20	36
3	416698	1	1¼" Top Link Pin - Zinc.....(6½")	1	1
-	416207	1	Klik Pin -- 7/16" - Zinc.....(Not Illustrated) ...	1	1
4	301037	26½	Mast Side -- Hitch	2	2
5	201601	15¼	Angle Support - RH -- Hitch	3	7
-	201602	15¼	Angle Support - LH -- Hitch.....(Not Illustrated) ...	3	7
6	300839	146	Cat III Pull Piece Bracket – Hitch (60")	1	-
-	300843	146	Pull Piece Bracket – Cat III Narrow (60").....(Not Illustrated) ...	-	-
-	301369	527	Pull Piece Bracket - Cat III 12 @ 38" (190" Tube).(Not Illustrated) ...	-	1
7	411294	1¾	Hex Bolt -- 7/8" x 10" NC - Gr 2 - Zinc	16	32
8	300837	2¾	Pull Pin -- 1-7/16" x 6"	2	2
-	416207	1	7/16" Klik Pin - Zinc.....(Not Illustrated) ...	2	2
9	461123	-	Warning Decal -- "Read Operators Manual"	1	1
10	461138	-	Danger Decal -- "Crushing Hazard"	1	1

150° FOLDING TOOL BAR

**Model No. 1220C
12 Row @ 38" Cultivator**



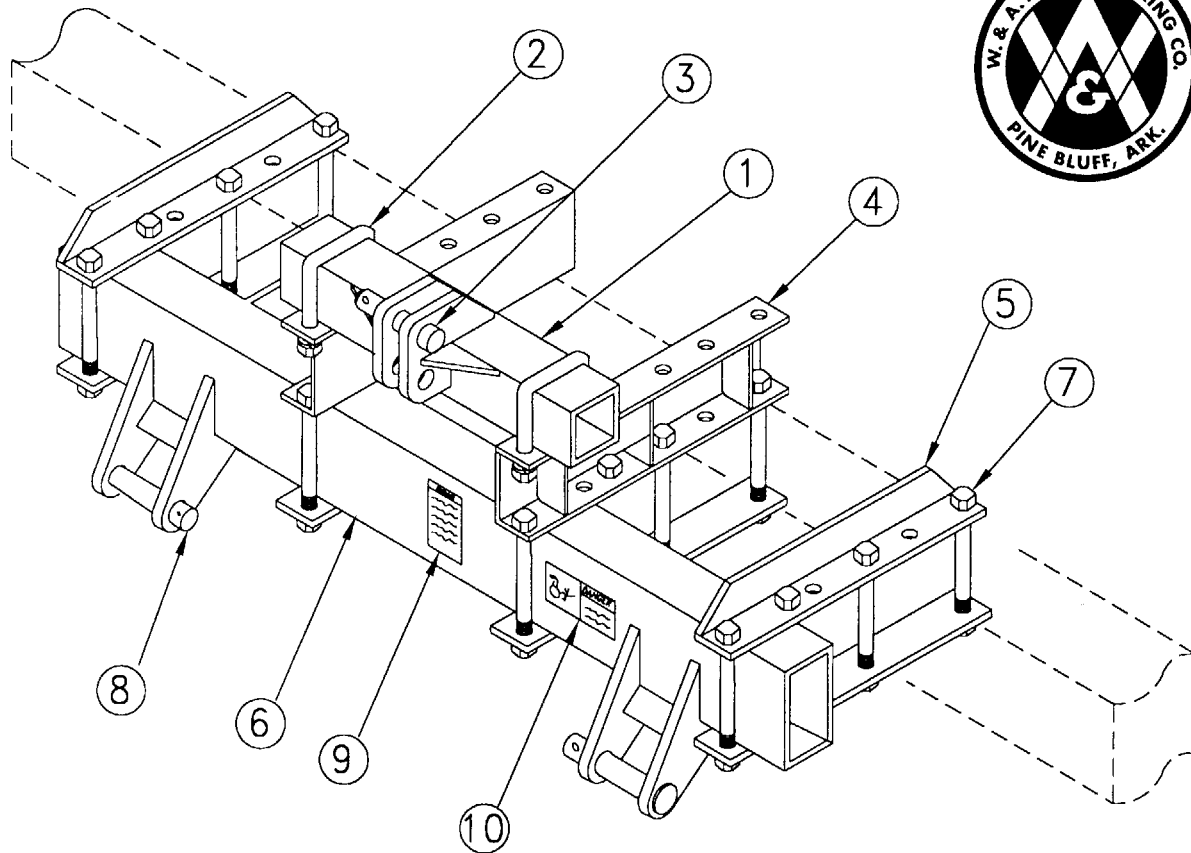
TOOL BAR

ITEM NO.	PART NO.	WT. LBS.	DESCRIPTION	QTY. REQ'D 12 Row
1	NPN	890	Center Section -- 12 Row @ 38" Cultivator ... (264" Tube).....	1
2	NPN	355	Wing -- 12 Row @ 38" Cultivator (104") RH	1
-	NPN	355	Wing -- 12 Row @ 38" Cultivator (104") LH	1

TOOL BAR

<u>ITEM NO.</u>	<u>PART NO.</u>	<u>WT. LBS.</u>	<u>DESCRIPTION</u>	<u>QTY. REQ'D</u> <u>12 Row</u>
3	302085	21	Follow Arm - 150° Fold Bar	2
4	302086	2¾	Cylinder Lock Pin - 150° Fold Bar	2
-	411545	-	Hex Bolt -- 1/2" x 1-1/2" NC - Gr 5 - Zinc	2
-	413008	-	Flat Washer -- 1/2" - Zinc	2
-	413508	-	Lock Washer -- 1/2" - Zinc	2
5	302084	23¼	Folding Arm - 150° Fold Bar	2
6	476026	100	Hydraulic Cylinder -- 5" x 16"	2
-	446188	1/4	1/2" x 1/2" Swivel Orifice Elbow	4
7	204388	11½	Pivot Pin -- 150° Fold Bar.....(2" x 13-1/8")	2
-	416133	-	Roll Pin -- 1/2" x 3-1/2" - Zinc	2
8	204389	4	Follow Arm Pin -- 150° Fold Bar.....(1¼" x 11½")	2
-	416109	-	Roll Pin -- 5/16" x 2-1/2" - Zinc	2
9	204390	4½	Folding Arm Pin -- 150° Fold Bar.....(1¼" x 13-1/8")	2
-	416109	-	Roll Pin -- 5/16" x 2-1/2" - Zinc	2
10	302087	3	Wing Lock Pin - 150° Fold Bar	2
-	416204	-	1/4" Klik Pin - Zinc	2
11	204398	3/4	Stop Block -- 150° Fold Bar	4
-	411584	1/4	Hex Bolt -- 3/4" x 2" NC - Gr 5 - Zinc	4
-	413512	-	Lock Washer -- 3/4" - Zinc	4
13	461113	-	Warning Decal -- High Pressure Fluid	1
14	461137	-	Safety Decal -- Electrocution Hazard	1
15	461135	-	Safety Decal -- Overhead Wing Hazard	1
16	461200	-	Amber Reflector	4
17	461201	-	Red Reflector	4
N/I	302089	34½	Wing Support Stand -- 12 Row @ 38" (66-1/4" Tube)	2
-	415004	2½	3/4" Sq. U-Bolt x 7" x 9" Leg	4
-	412012	-	Hex Nut -- 3/4" - 10 - Gr 2 - Zinc	8
-	413512	-	Lock Washer -- 3/4" - Zinc	8

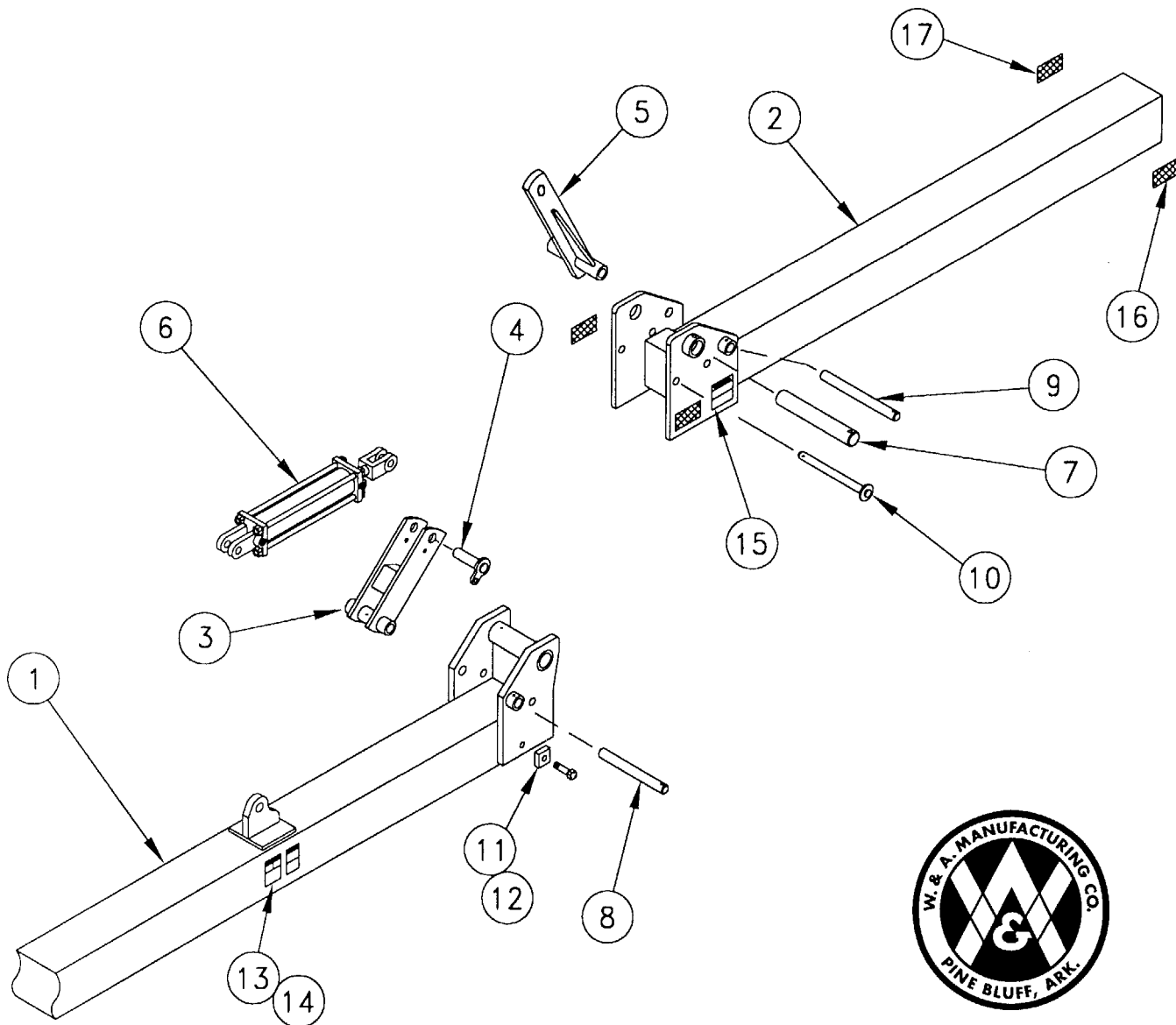
CAT III HITCH FOR 7" SQ. BAR



ITEM NO.	PART NO.	WT. LBS.	DESCRIPTION	QTY. REQ'D #1446
1	300279	47½	Mast Top – Cat III (#1429 Hitch)	-
2	415018	2	7/8" Sq. U-Bolt x 4" x 6-1/2" Leg	-
-	413514	-	Lock Washer -- 7/8" - Zinc	32
-	412014	-	Hex Nut -- 7/8" - 9 - Gr 2 - Zinc	32
3	416698	1	1-1/4" Top Link Pin - Zinc.....(6½")	1
-	416207	1	7/16" Klik Pin - Zinc.....	1
4	301037	26½	Hitch Mast Side -- #1429 Hitch	-
5	201601	15¼	Angle Support - RH (3P3DH Hitch)	8
-	201602	15¼	Angle Support - LH (3P3DH Hitch)	8
6	301368	600	Pull Piece Bracket for Cultivator- Cat III 12 @ 38 (190" Tube)	1
7	411294	1¾	Hex Bolt -- 7/8" x 10" NC - Gr 2 - Zinc.....	32
8	300837	2¾	Pull Pin -- 1-7/16" x 6"	2
-	416207	1	7/16" Klik Pin - Zinc.....	2
9	461123	-	<i>Read Operators Manual Sign</i>	1
10	461138	-	<i>Crushing Hazard Sign</i>	1

150° FOLDING TOOL BAR

**Model Nos. 1220WM & 1222WM & 1226WM
for WATERMIZER**



TOOL BAR

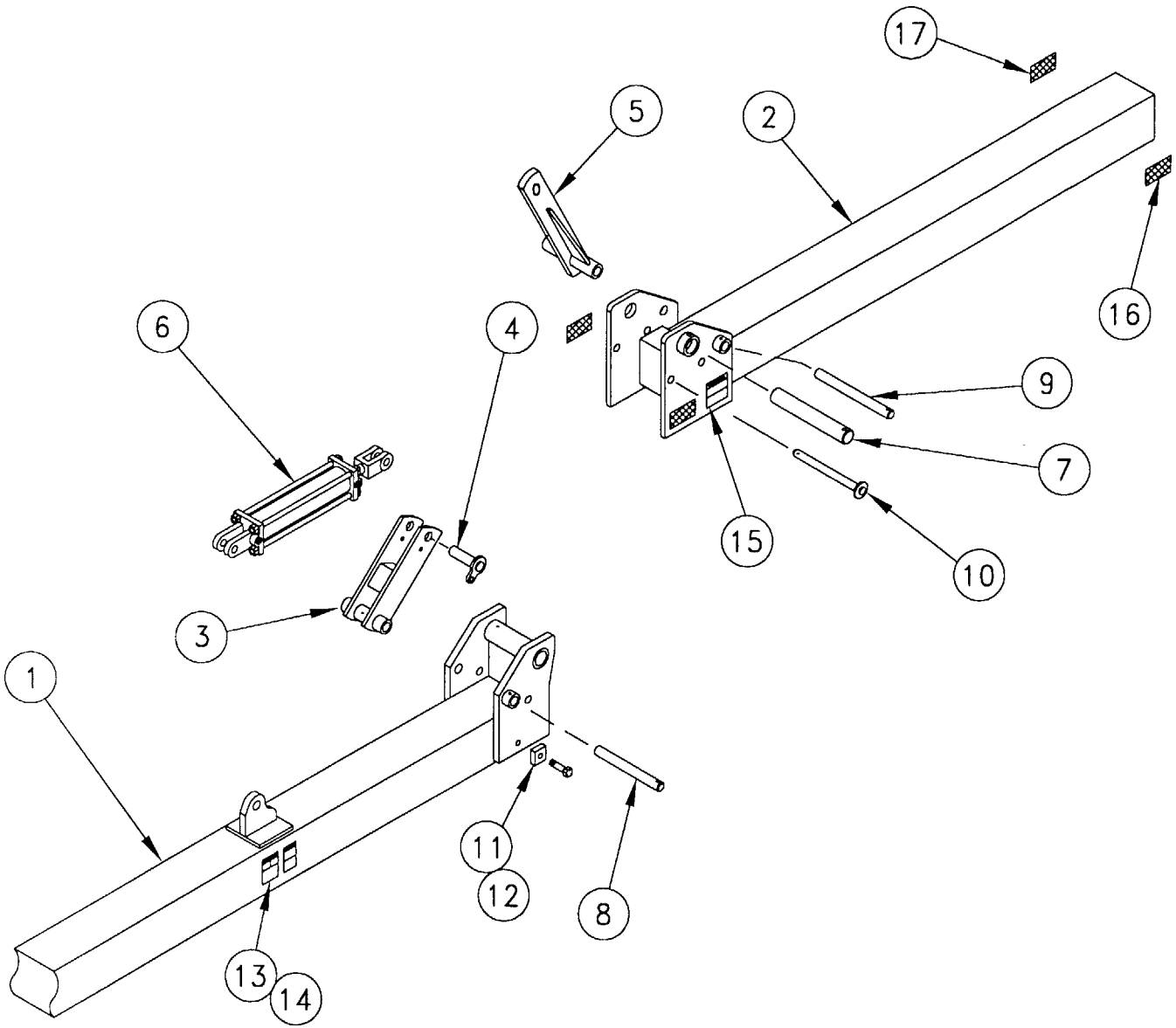
ITEM NO.	PART NO.	WT. LBS.	DESCRIPTION	QTY. REQ'D	
				8 Row	12 Row
1	302092	675	Center Section -- 8 Row @ 38" (188" Tube)	1	-
-	302095	723	Center Section -- 12 Row @ 30" (205½" Tube)	-	-
-	302098	872	Center Section -- 12 Row @ 38" (262" Tube)	-	1
-	302283	882	Center Section -- 16 Row @ 30" (265½" Tube)	-	-
2	302094	278	Wing -- 8 Row @ 38" (76") LH	1	-
-	302093	278	Wing -- 8 Row @ 38" (76") RH	1	-
-	302096	318	Wing -- 12 Row @ 30" (91") RH	-	1
-	302097	318	Wing -- 12 Row @ 30" (91") LH	-	1
-	302099	359	Wing -- 12 Row @ 38" (105") RH	-	1
-	302100	359	Wing -- 12 Row @ 38" (105") LH	-	1

TOOL BAR

ITEM NO.	PART NO.	WT. LBS.	DESCRIPTION	QTY. REQ'D	
				8 Row	12 Row
3	302085	21	Follow Arm - 150° Fold Bar	2	2
4	302086	2¾	Cylinder Lock Pin - 150° Fold Bar	2	2
-	411545	-	Hex Bolt -- 1/2" x 1-1/2" NC - Gr 5 - Zinc	2	2
-	413008	-	Flat Washer -- 1/2" - Zinc	2	2
-	413508	-	Lock Washer -- 1/2" - Zinc	2	2
5	302084	23¼	Folding Arm - 150° Fold Bar	2	2
6	476026	100	Hydraulic Cylinder -- 5" x 16"	2	2
-	446188	1/4	1/2" x 1/2" Swivel Orifice Elbow	4	4
7	204388	11½	Pivot Pin -- 150° Fold Bar.....(2" x 13-1/8")	2	2
-	416133	-	Roll Pin -- 1/2" x 3-1/2" - Zinc	2	2
8	204389	4	Follow Arm Pin -- 150° Fold Bar.....(1¼" x 11½")	2	2
-	416109	-	Roll Pin -- 5/16" x 2-1/2" - Zinc	2	2
9	204390	4½	Folding Arm Pin -- 150° Fold Bar.....(1¼" x 13-1/8")	2	2
-	416109	-	Roll Pin -- 5/16" x 2-1/2" - Zinc	2	2
10	302087	3	Wing Lock Pin - 150° Fold Bar	2	2
-	416204	-	1/4" Klik Pin - Zinc	2	2
11	204398	3/4	Stop Block -- 150° Fold Bar	4	4
-	411584	1/4	Hex Bolt -- 3/4" x 2" NC - Gr 5 - Zinc	4	4
-	413512	-	Lock Washer -- 3/4" - Zinc	4	4
13	461113	-	Warning Decal -- High Pressure Fluid	1	1
14	461137	-	Safety Decal -- Electrocutation Hazard	1	1
15	461135	-	Safety Decal -- Overhead Wing Hazard	1	1
16	461200	-	Amber Reflector	4	4
17	461201	-	Red Reflector	4	4
N/I	302088	28	Wing Support Stand -- 8 Row (44¾" Tube)	2	-
-	302090	31	Wing Support Stand -- 12 Row @ 30" (54-1/8" Tube) ...	-	2
-	302089	34½	Wing Support Stand -- 12 Row @ 38" (66-1/4" Tube) ...	-	2
-	302286	30½	Wing Support Stand -- 16 Row @ 38" (52-3/8" Tube) ...	-	-
-	415004	2½	3/4" Sq. U-Bolt x 7" x 9" Leg	4	4
-	412012	-	Hex Nut -- 3/4" - 10 - Gr 2 - Zinc	8	8
-	413512	-	Lock Washer -- 3/4" - Zinc	8	8

**16 ROW @ 30" BEDDER & WATER PLOW
150° FOLDING TOOL BAR**

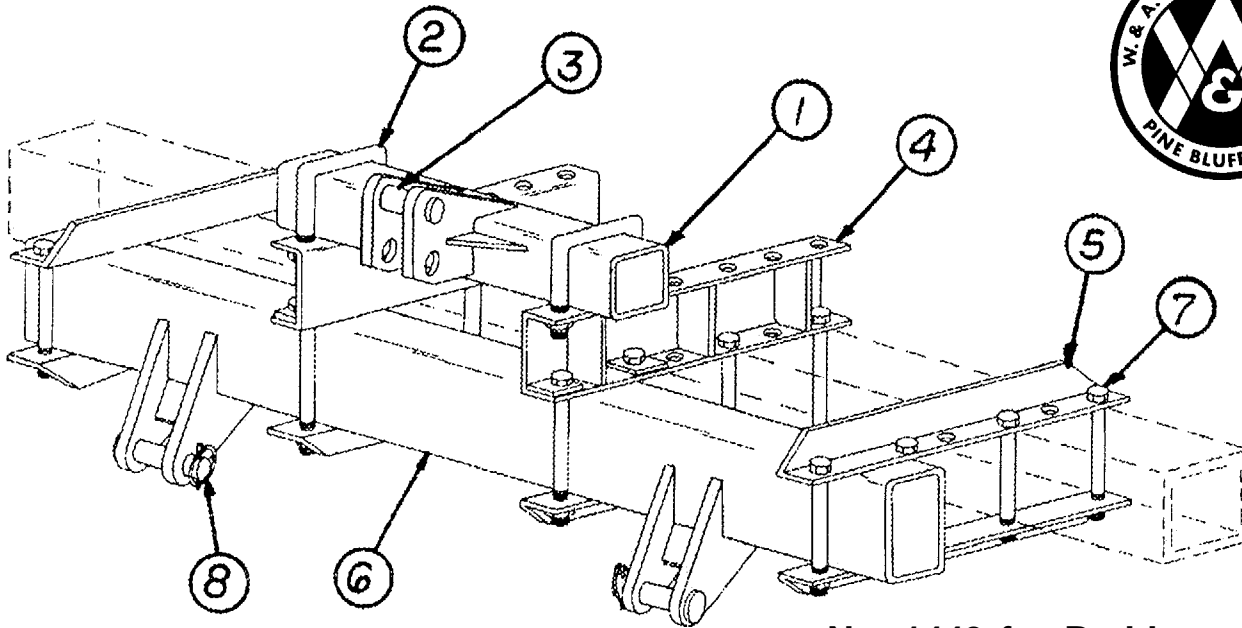
Model No. 1228



TOOL BAR

ITEM NO.	PART NO.	WT. LBS.	DESCRIPTION	QTY. REQ'D 16 Row @ 30"
1	302283	878	Center Section -- 16 Row @ 30" (265½" Tube)	1
2	302284	392	Wing -- 16 Row @ 30" (117") RH	1
-	302285	392	Wing -- 16 Row @ 30" (117") LH	1
3	302085	21	Follow Arm - 150° Fold Bar	2
4	302086	2¾	Cylinder Lock Pin - 150° Fold Bar	2
-	411545	-	Hex Bolt -- 1/2" x 1-1/2" NC - Gr 5 - Zinc	2
-	413008	-	Flat Washer -- 1/2" - Zinc	2
-	413508	-	Lock Washer -- 1/2" - Zinc	2
5	302084	23¼	Folding Arm - 150° Fold Bar	2
6	476026	100	Hydraulic Cylinder -- 5" x 16"	2
-	446188	1/4	1/2" x 1/2" Swivel Orifice Elbow	4
7	204388	11½	Pivot Pin -- 150° Fold Bar.....(2" x 13-1/8")...	2
-	416133	-	Roll Pin -- 1/2" x 3-1/2" - Zinc	2
8	204389	4	Follow Arm Pin -- 150° Fold Bar.....(1¼" x 11½") ..	2
-	416109	-	Roll Pin -- 5/16" x 2-1/2" - Zinc	2
9	204390	4½	Folding Arm Pin -- 150° Fold Bar.....(1¼" x 13-1/8")	2
-	416109	-	Roll Pin -- 5/16" x 2-1/2" - Zinc	2
10	302087	3	Wing Lock Pin - 150° Fold Bar	2
-	416204	-	1/4" Klik Pin - Zinc	2
11	204398	3/4	Stop Block -- 150° Fold Bar	4
-	411584	1/4	Hex Bolt -- 3/4" x 2" NC - Gr 5 - Zinc	4
-	413512	-	Lock Washer -- 3/4" - Zinc	4
13	461113	-	Warning Decal -- High Pressure Fluid	1
14	461137	-	Safety Decal -- Electrocutation Hazard	1
15	461135	-	Safety Decal -- Overhead Wing Hazard	1
16	461200	-	Amber Reflector	4
17	461201	-	Red Reflector	4
N/I	302286	30	Wing Support Stand -- 16 Row @ 30" (52-3/8" Tube)	2
-	415004	2½	3/4" Sq. U-Bolt x 7" x 9" Leg	4
-	412012	-	Hex Nut -- 3/4" - 10 - Gr 2 - Zinc	8
-	413512	-	Lock Washer -- 3/4" - Zinc	8

CAT III HITCH FOR 7" SQ. BAR

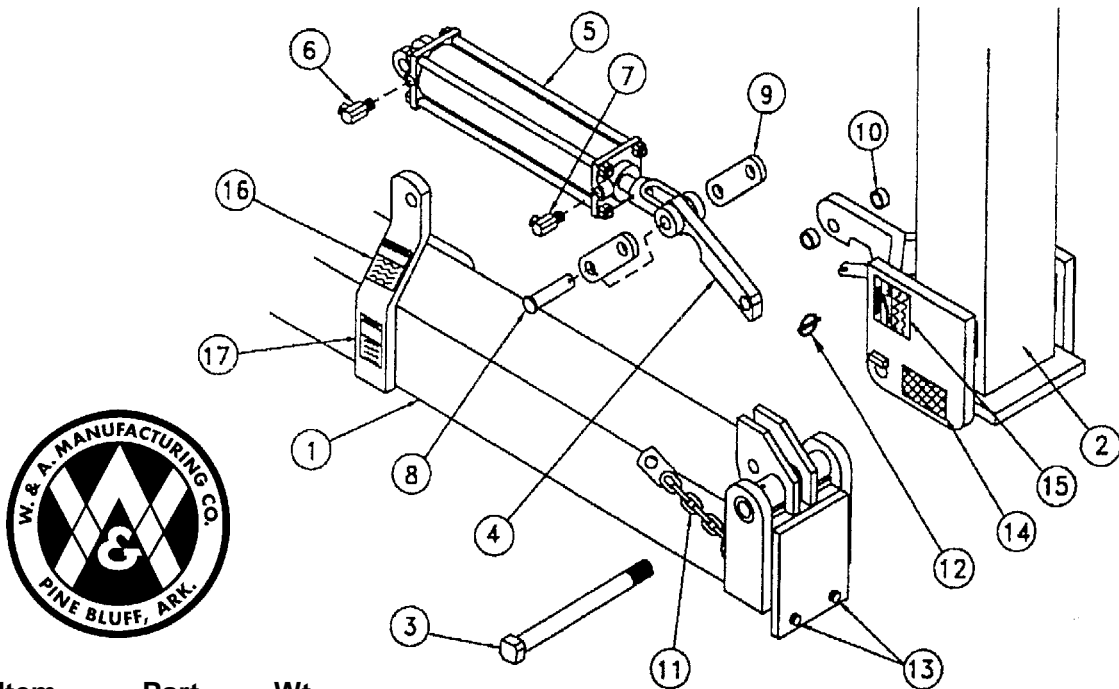


No. 1443 for Bedders
No. 1444 for Water Plows

Item No.	Part No.	Wt. Lbs.	Description	Qty. Required	
				1443	1444
1	300279	47½	Mast Top – Cat III	1	1
2	415018	2	7/8" Sq. U-Bolt x 4" x 6-1/2" Leg	2	2
-	413514	-	Lock Washer -- 7/8" - Zinc	32	24
-	412014	-	Hex Nut -- 7/8" - 9 - Gr 2 - Zinc	32	24
3	416698	1	1-1/4" Top Link Pin - Zinc.....(6-1/2")	1	1
-	416207	1	7/16" Klik Pin - Zinc.....	1	1
4	301037	26½	Hitch Mast Side	2	2
5	201601	15¼	Angle Support - RH.....	7	5
-	201602	15¼	Angle Support - LH	7	5
6	301369	679	Cat III Pull Piece Bracket (190" - 1/2" Wall)	1	-
-	301373	505	Cat III Pull Piece Bracket (196" - 3/8" Wall)	-	1
7	411294	1¾	Hex Bolt -- 7/8" x 10" NC - Gr 2 - Zinc.....	32	24
8	300837	2¾	Pull Pin -- 1-7/16" x 6"	2	2
-	416207	1	7/16" Klik Pin - Zinc.....	2	2

7" X 7" FOLDING TOOL BAR

12 ROW @ 38"



Item No.	Part No.	Wt. Lbs.	Description	Qty. Req'd
1	301374	949	Center Section Only (12 Row @ 38" Disk Bedder)*	1
-	301375	1277	Center Section Only with Rear Center Bar*	-
2	301376	370	Wing Only – RH (105" Long)*	1
-	301377	370	Wing Only – LH (105" Long)*	1
-	301378	371	Wing Only – RH (105" Long with Eye Hook)*	-
-	301379	371	Wing Only –LH (105" Long with Eye Hook)*	-
3	411684	5	Hex Bolt -- 1-1/4" x 13-1/2" NC - Gr 5 - Zinc - Full Body ..	2
-	412420	1/4	Jam Nut -- 1-1/4" - 7 - Gr 2 - Zinc	4
4	202649	5 1/2	Locking Bar -- Fold Tool Bar.....(1" x 2" x12 1/2")	2
5	476016	43 1/2	Hydraulic Cylinder -- 3-1/2" x 16"	2
-	477050	-	Seal Kit -- 3-1/2" x 8" & 16" Lion Cyl (1-1/4" Rod).....	-
6	446188	1/2	1/2" x 1/2" Swivel Orifice Elbow.....(90°)	2
7	444024	1/2	90° Elbow Swivel, 1/2" x 1/2"*	2
8	416664	1/2	Clevis Pin, 1 x 4"*	4
9	202650	1 1/4	Lock Strap -- Fold Tool Bar.....(1/2" x 2" x6")	4
10	201840	-	Spacer -- 1" Pipe x 5/8" Long.....	4
11	301361	1 3/4	Travel Lock (Weld On)*	2
12	416204	-	1/4" Klik Pin - Zinc	2
13	414833	-	Set Screw -- 3/4" x 3" NC - Sq. Head - Zinc	4
-	412412	-	Jam Nut -- 3/4" - 10 - Gr 2 - Zinc	4
14	461200	-	Amber Reflector*	4
15	461135	-	Safety Decal -- Overhead Wing Hazard	1
16	461113	-	Warning Decal -- High Pressure Fluid	1
17	461137	-	Safety Decal -- Electrocution Hazard	1
N/I	461123	-	Safety Decal -- Read Operator Manual (Near Hitch)	1
N/I	461138	-	DANGER – Crushing Hazard Sign (Near Hitch)*	1
N/I	461201	-	Red Reflector (On Rear of Tool Bar)*	4